




Anlage 1 Übersichtskarte zur Verordnung über das Landschaftsschutzgebiet "Mausohr-Jagdgebiet Leinholz"

Legende

-  Grenze des Landschaftsschutzgebiets
-  Gewässer II. u. III. Ordnung
-  Landkreisgrenze

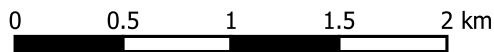
LANDKREIS GÖTTINGEN

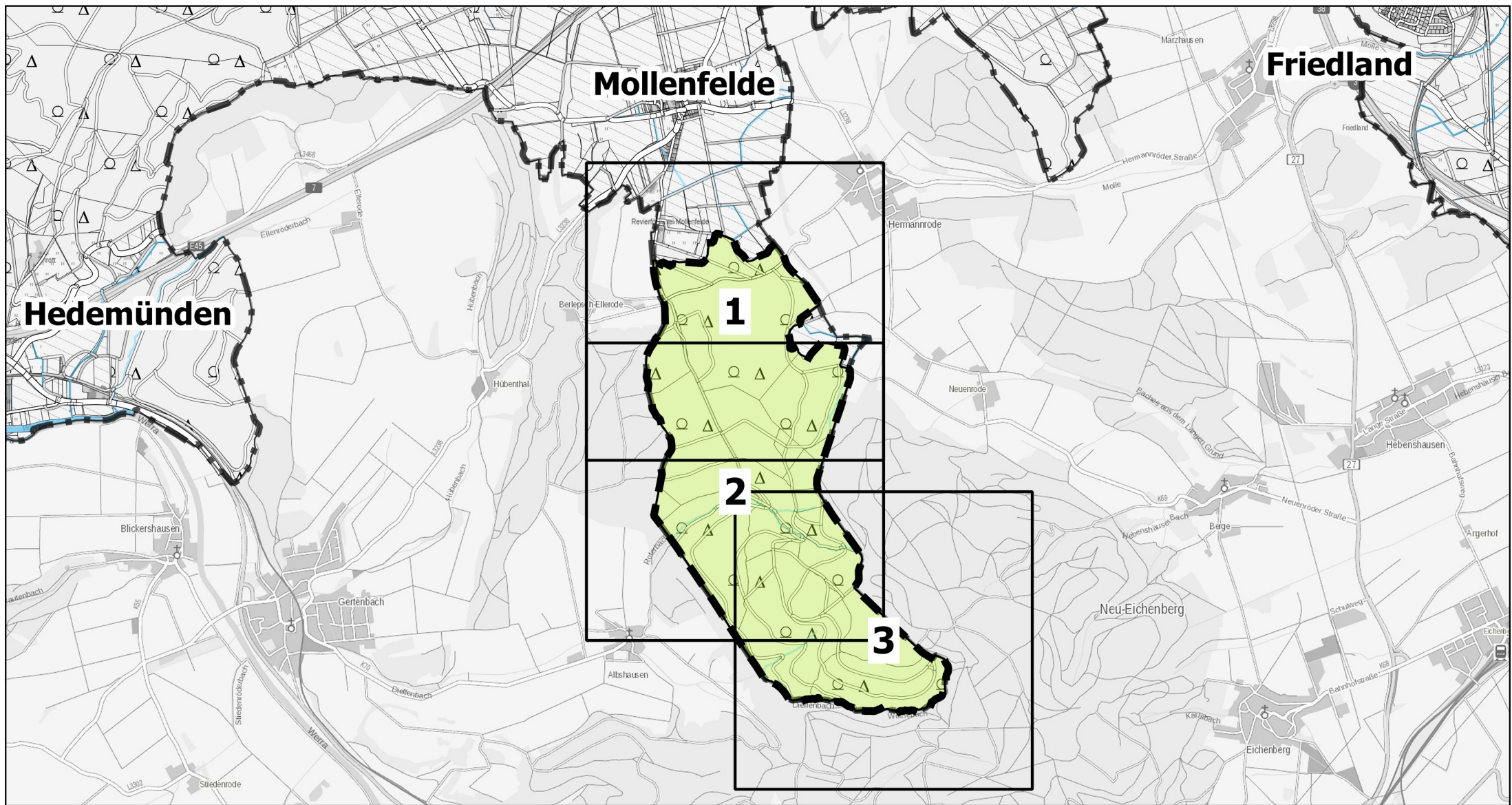
Landkreis Göttingen
Der Landrat

gez.
Bernhard Reuter

Göttingen, den 02.12.2020




Maßstab 1:35.000

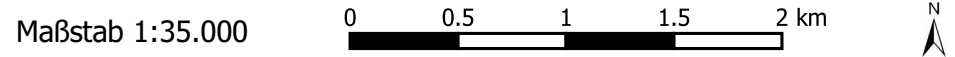




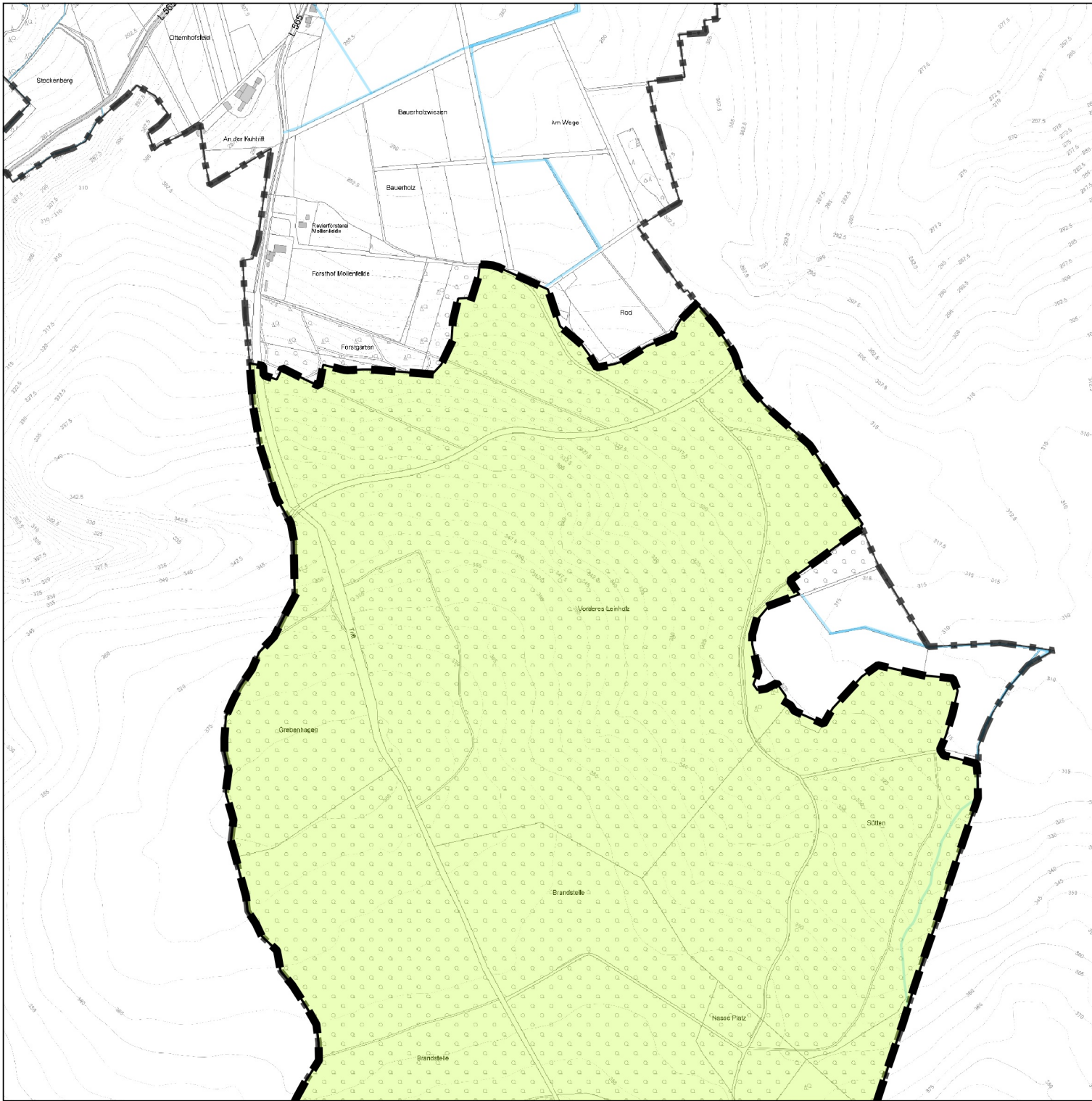
Übersicht der Detailkarten 1 - 3 zum Landschaftsschutzgebiet "Mausohr-Jagdgebiet Leinholz"

Legende

-  Grenze des Landschaftsschutzgebiets
-  Gewässer II. u. III. Ordnung
-  Landkreisgrenze



Göttingen, den 02.12.2020






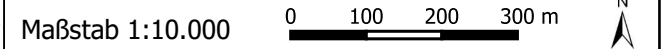
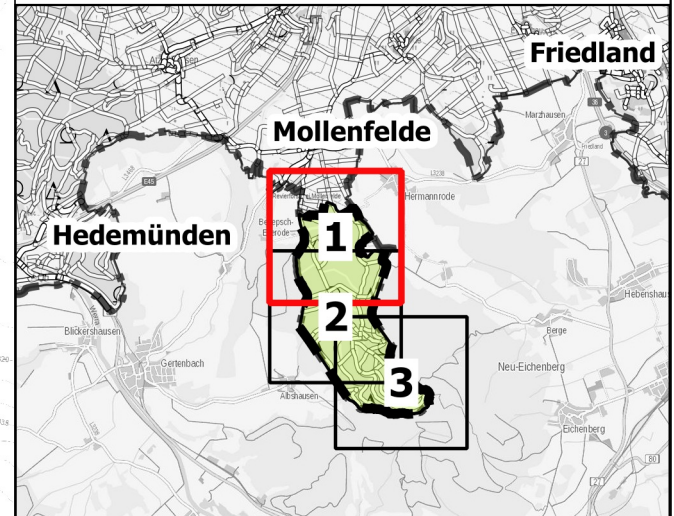
Anlage 2



Detailkarte 1 zur Verordnung über das Landschaftsschutzgebiet "Mausohr-Jagdgebiet Leinholz"

Legende

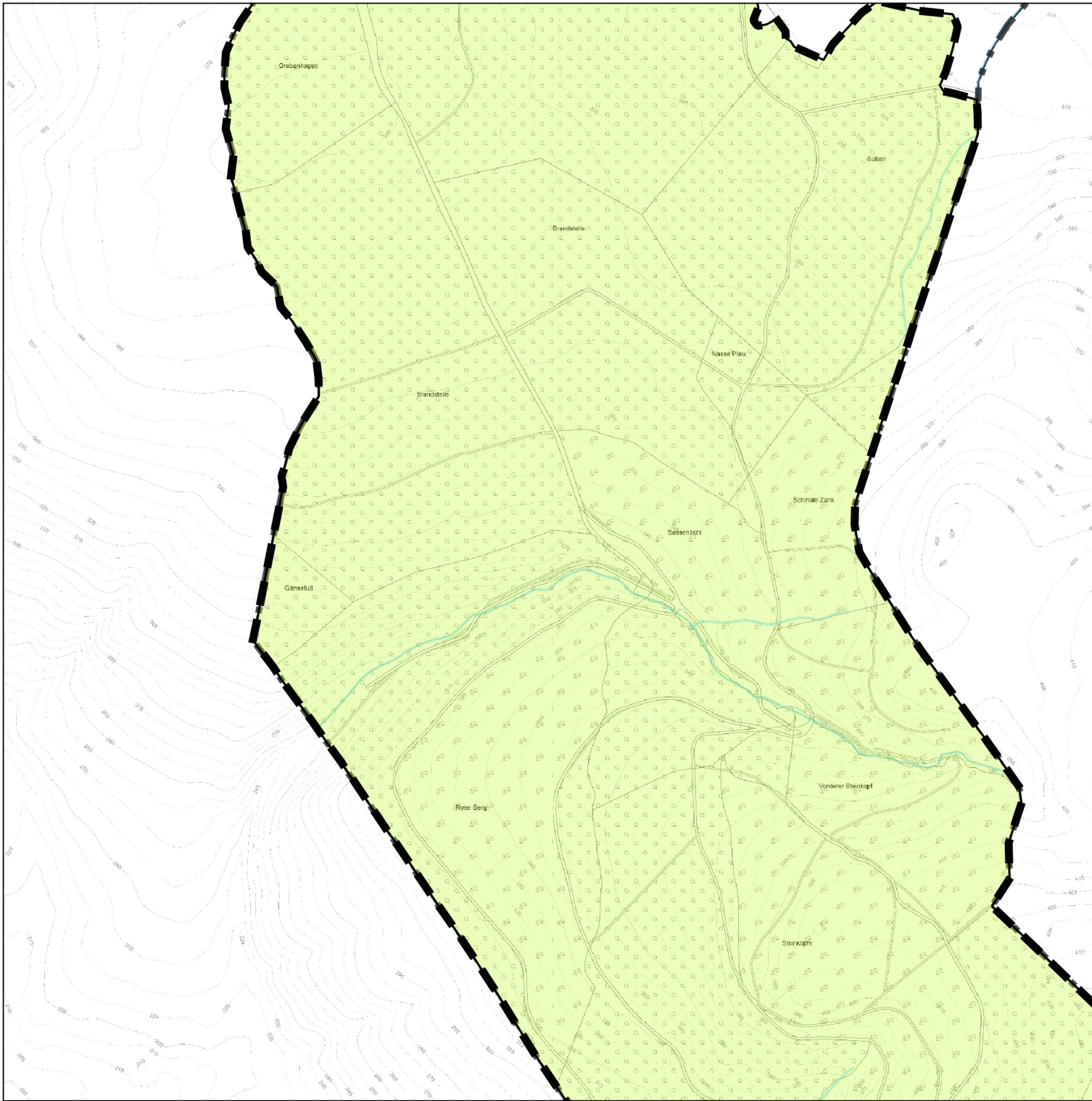
-  Grenze des Landschaftsschutzgebiets
-  Gewässer II. und III. Ordnung
-  Landkreisgrenze



Landkreis Göttingen
Der Landrat

gez.
Bernhard Reuter

Göttingen, den 02.12.2020






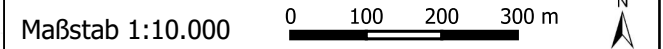
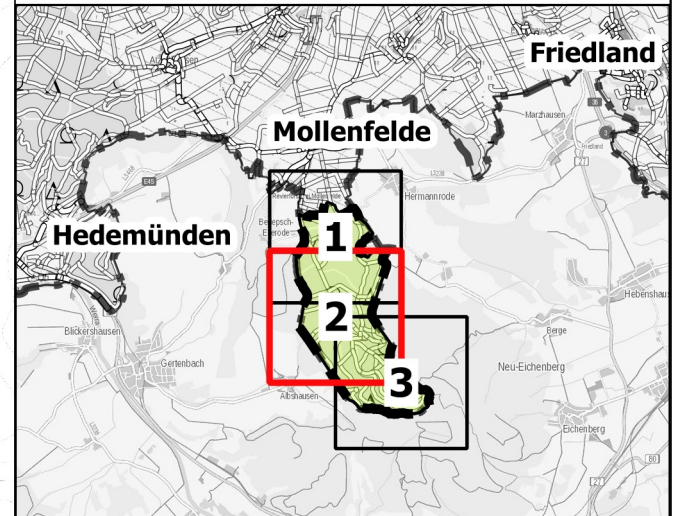
Anlage 2



Detailkarte 2 zur Verordnung über das Landschaftsschutzgebiet "Mausohr-Jagdgebiet Leinholz"

Legende

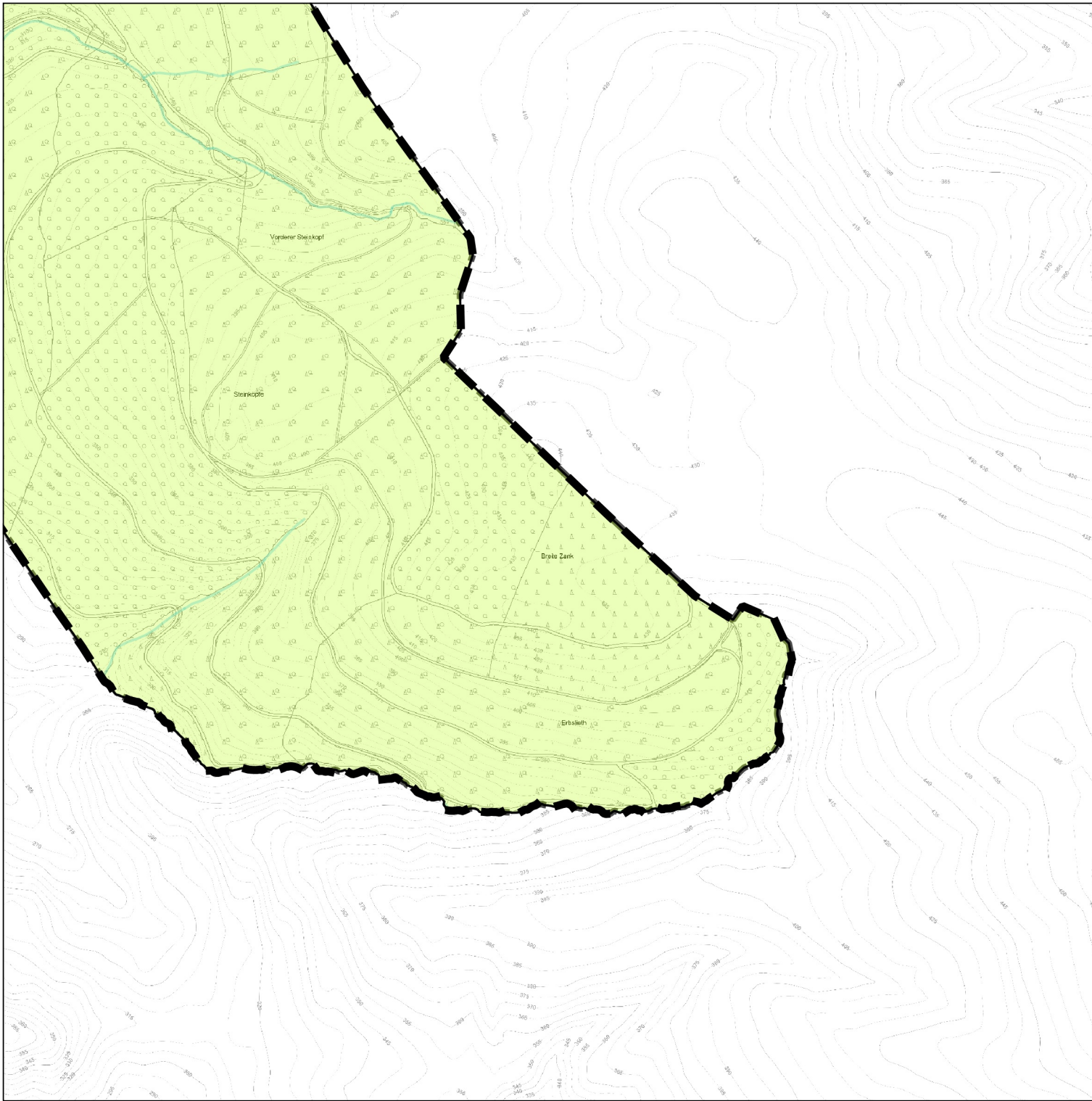
-  Grenze des Landschaftsschutzgebiets
-  Gewässer II. und III. Ordnung
-  Landkreisgrenze



Landkreis Göttingen
Der Landrat

gez.
Bernhard Reuter




Göttingen, den 02.12.2020

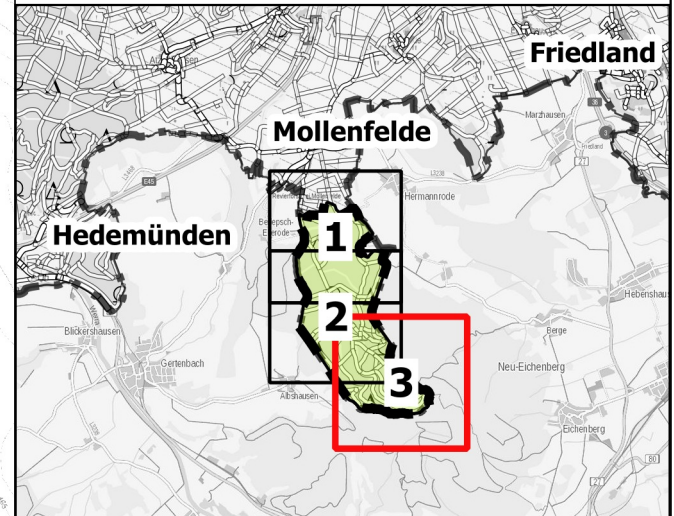




Anlage 2

Detailkarte 3 zur Verordnung über das Landschaftsschutzgebiet "Mausohr-Jagdgebiet Leinholz"

Legende

-  Grenze des Landschaftsschutzgebiets
-  Gewässer II. und III. Ordnung
-  Landkreisgrenze



Maßstab 1:10.000  0 100 200 300 m 

Landkreis Göttingen
Der Landrat

gez.
Bernhard Reuter

Göttingen, den 02.12.2020